

# Data Concentrator Unit

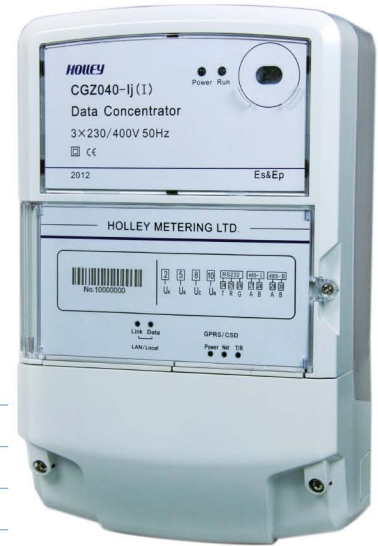
## CGZ040-1j

Smart Data Concentrator Unit (DCU)



### Feature

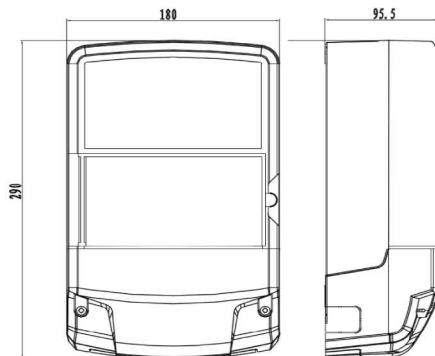
CGZ040-1j data concentrator is our new system component for the AMM/AMR solution, which play as a remote uplink/downlink communication node. The concentrator manages meters and other devices on the downlink network and provides data transfers between these devices and the utility's System Software with uplink channel.



### Specifications

Applicable Standard	DLMS
Connection type	3P4W type
Voltage Reference	120V, 220V, 230V (Optional)
Operating voltage range	0.8Un ~ 1.2Un
Frequency Reference	50Hz~60Hz
Power consumption	10W/30VA (Include communication module)
Local interface	RS485, Optical port, RS232
Remote communication	support 2 Modul - 1 Port of Ethernet - 1 Port of Modem (GPRS or WCDMA)
Meter communication	PLC or RF (Optional)
Maximum. Meter	Support 1024 Meter.
Memory	Historical data storage : 96MB, 30days per 15 minutes load curve Application data of the firmware : 32MB Executive program : 64MB Program download : 64MB
Weatherproof protect	IP54
Impulse voltage test	8kV
A.C Voltage test	4.4kV
Display screen	LED work state and Communication state
Clock accuracy	<0.5S/Day
Anti-tempering function	DCU Cover, Terminal Cover
Operating temperature	-45°C to +75°C
Dimensions	290 x 183 x 95 mm

### Dimension



### Accessories



Holley Group Electric (Thailand) Co., Ltd.

No. 77/51 14th Floor, Sinn Sathorn Tower, Krungthongburi Road, Klongthonsai, Klungsan, Bangkok 10600

Tel. (+662) 867-6971-3 Fax. (+662) 867-6980

<http://www.holley.co.th>, <http://www.holley.cn>